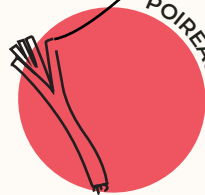


ÉPINARD



POIREAU



ENDIVE



CAROTTE



CÉLERI



Les légumes de Décembre

CHOU



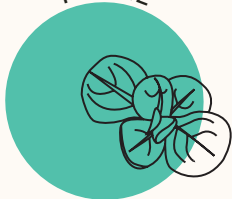
BETTERAVE



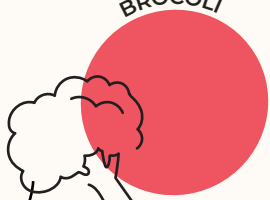
NAVET



MÂCHE



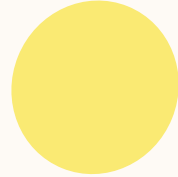
BROCOLI



OIGNON



POIRE

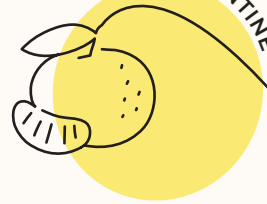


Les fruits de Décembre

KIWI



CLÉMENTINE



POMME



PAMPLEMOUSE

